

Residential Life & Housing

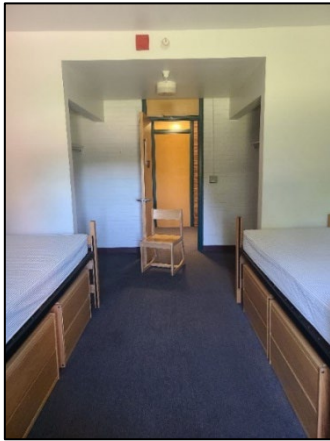
Room and Suite Information



Frost, Alumni, Stone, and Davis Halls

Standard Housing

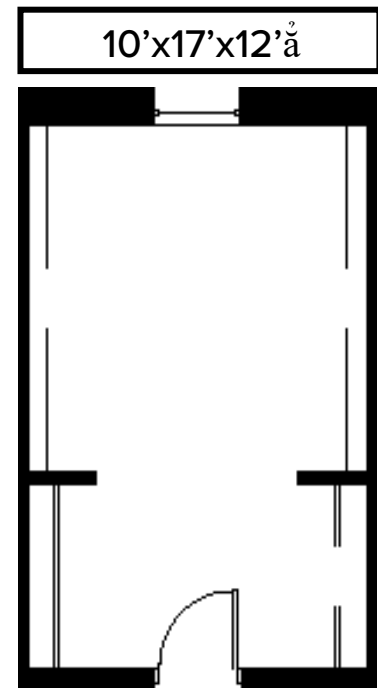
Double Room



Each student is assigned:

- Twin XL Bed:
 - Mattress 38"x80"x12"
 - Frame – adjustable height 12"-24"
- Desk:
 - 21"x42"x28"
- Set of 2 Drawers:
 - 30"x26"x18"
- Two-Position Desk Chair:
 - 16"x16"x32"
- Closet:
 - 70"x90"x24"^ã (each building is a slightly different size)
- Window:
 - 36"x73"^ã

^ã = Approximate size



Building Amenities

- Frost & Davis Halls:
 - Laundry
 - Shared bathrooms (cleaned & stocked by the college)

Aiken Hall

Premium Housing

Single Room

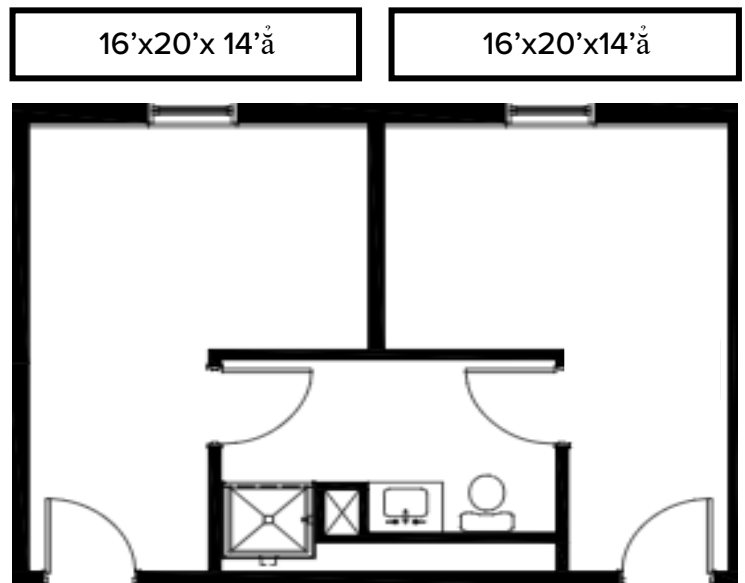
(Single rooms have limited availability and assigned by seniority)



Each student is assigned:

- Twin XL Bed:
 - Mattress 38"x80"x12"
 - Frame - adjustable height 12"-24"
- Desk:
 - 21"x42"x28"
- Set of 2 Drawers:
 - 30"x26"x18"
- Two-Position Desk Chair:
 - 16"x16"x32"
- Closet:
 - 33"x28"x70"^ã
- Window:
 - Varies depending on floor

^ã = Approximate size



Building Amenities

- Private bathroom (cleaned and stocked by suite occupants)
- Laundry

Aiken Hall

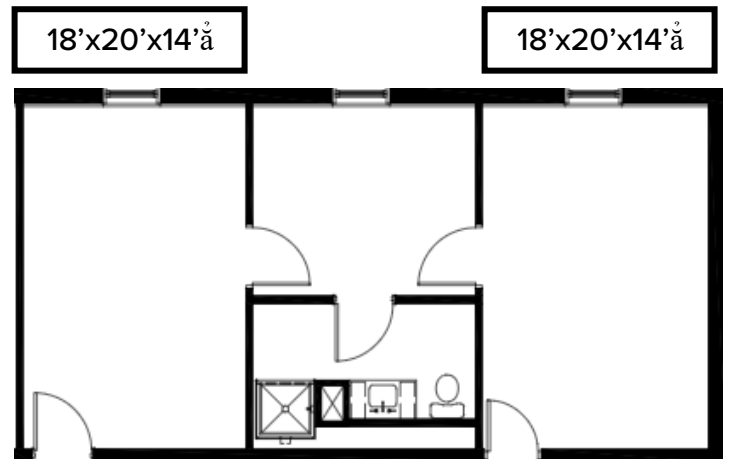
Premium Housing

Double Room



Each student is assigned:

- Twin XL Bed:
 - Mattress 38"x80"x12"
 - Frame - adjustable height 12"-24"
- Desk:
 - 21"x42"x28"
- Set of 2 Drawers:
 - 30"x26"x18"
- Two-Position Desk Chair:
 - 16"x16"x32"
- Closet:
 - 33"x28"x70"
- Window:
 - Varies depending on floor



≈ = Approximate size

Building Amenities

(Entire suite is cleaned and stocked by suite occupants)

- Private lounge
- Private bathroom
- Laundry

Chumley's

Premium Housing

Single & Double Room

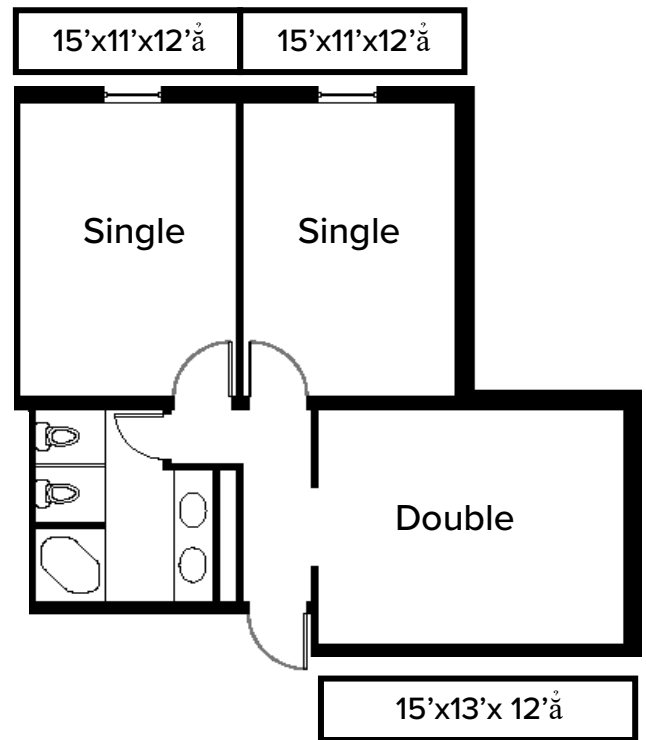
(Single rooms have limited availability and assigned by seniority)



Each student is assigned:

- Twin XL Bed:
 - Mattress 38"x80"x12"
 - Frame - adjustable height 12"-24"
- Desk:
 - 21"x42"x28"
- Set of 2 Drawers:
 - 30"x26"x18"
- Two-Position Desk Chair:
 - 16"x16"x32"
- Closet:
 - 40"x84"x24"^ã
- Window:
 - 35"x26"^ã

^ã = Approximate size



Building Amenities

- Lounge
- Private bathroom (cleaned and stocked by the college)
- Kitchen
- Laundry

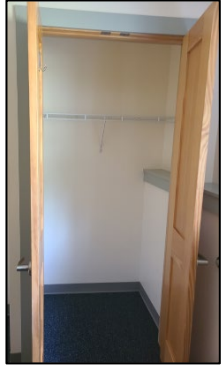
Bridges

Premium Housing

Single Room

Double Room

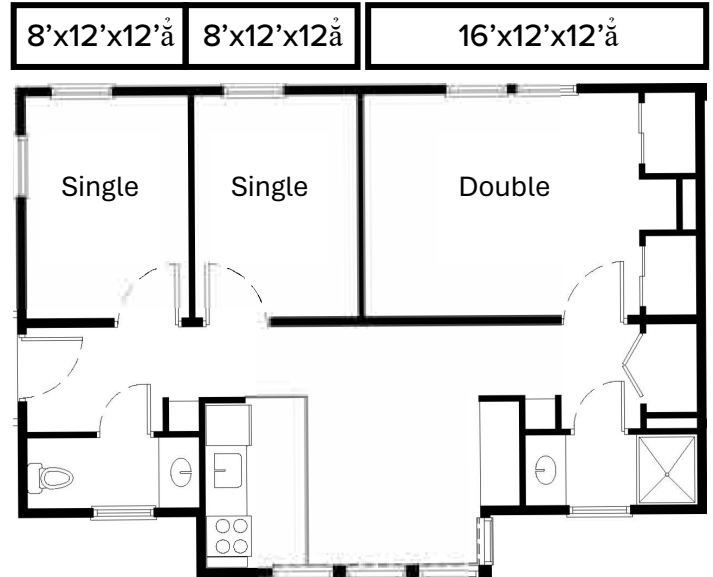
(Single rooms have limited availability and assigned by seniority)



Each student is assigned:

- Twin XL Bed:
 - Mattress 38"x80"x12"
 - Frame - adjustable height 12"-24"
- Desk:
 - 21"x42"x28"
- Set of 2 Drawers:
 - 30"x26"x18"
- Two-Position Desk Chair:
 - 16"x16"x32"
- Closet:
 - 33"x28"x70"^ã
- Window:
 - 32"x30"^ã

^ã = Approximate size



Building Amenities

(Entire suite is cleaned and stocked by suite occupants)

- Private lounge
- Private bathroom
- Private kitchen
- Private laundry

What NOT to Bring

Items on this list are not allowed in the Residence Halls due to concern for the health and safety of our community.

- Open flames or heating coils. This includes candles, incense, camp stoves, hurricane lamps, and lanterns.
- Electrical appliances including but not limited to halogen lamps, hot plates, toasters, immersion coils, “George Foreman” type grills, toaster ovens, electric blankets, space heaters, sun lamps, and power tools.
- Alcohol, alcohol containers, illicit drugs, or drug-use paraphernalia.
- Explosives, firearms, firecrackers, weapons, volatile liquids, and fuel.
- Decorations that hang from the ceiling of your residence hall room. (Posters, pictures, and other combustible wall decorations which are not placed flat against the wall or block or hinder entryways are not permitted.) Combustible materials may not cover more than 20% of each wall.
- Extension cords and multi-plug outlets (unless they have manufactured surge protection devices).
- Pets (except fish).
- Wooden constructions (lofts) or overstuffed furniture that has not been pre-approved by the College.
- Personal air conditioners.

The College reserves the right to have a student remove an item not on the list that is deemed a fire safety concern. If you are unsure about an item, email the Housing Office at Housing@landmark.edu BEFORE you pack it.

When you’re packing, keep in mind that all of your belongings should be able to fit on your side of the room. Also, the College cannot be held liable for any lost or stolen items, so use your discretion when you decide what to bring. If you are bringing valuables on campus, make sure they are covered under your parent’s homeowner’s policy, or you may want to purchase renter’s insurance or personal property insurance.

Housing Rates



Packing List



Landmark College: Your Home Away from Home

Welcome to Residential Life at Landmark College—your home away from home. Campus living can be an exciting and life-altering experience. Here, you will make new friends, share experiences, and create memories to last a lifetime.

Residential Life at Landmark College is committed to providing quality living options, programs, and services that support the academic mission of LC by promoting safety, encouraging student development, and fostering the understanding and appreciation of diversity within our community. In order to carry out this mission, we believe in the following principles:

- Providing safe, secure, clean, and reasonably priced residential environments conducive to the academic and personal development of the student
- Providing services, programs, and activities that encourage students to mature intellectually, emotionally, and spiritually to add value to their community and society at large
- Providing residential environments that honor human diversity and embrace students as individuals—each with rights and responsibilities, each with unique goals and needs

Each residential hall/area is staffed by a professional staff member, Resident Dean, student staff, and Resident Assistants who live in the hall with you. Staff are available right in your hall for support, emergency assistance, and to help create a positive and supportive community for everyone.

Residential Life values the multitude of different voices, opinions, experiences, and identities of the Landmark community. In the interest of creating inclusive communities and in an attempt to engage every student, Residential Life is committed to housing students regardless of race, color, national origin, sex, sexual orientation, age, disability, religion or faith system, veteran status, or gender identity. We aim to treat each individual as unique and respect their membership in the Landmark community.

If you have questions, please contact Housing@landmark.edu

Residential Life



Student Handbook



Housing Rates

